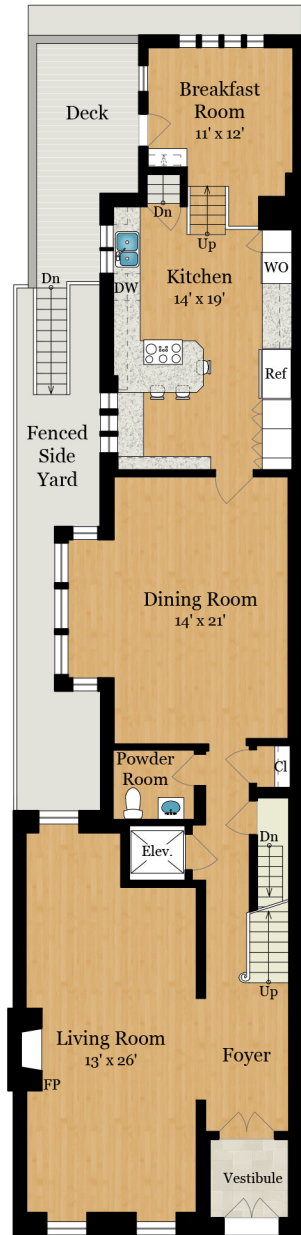


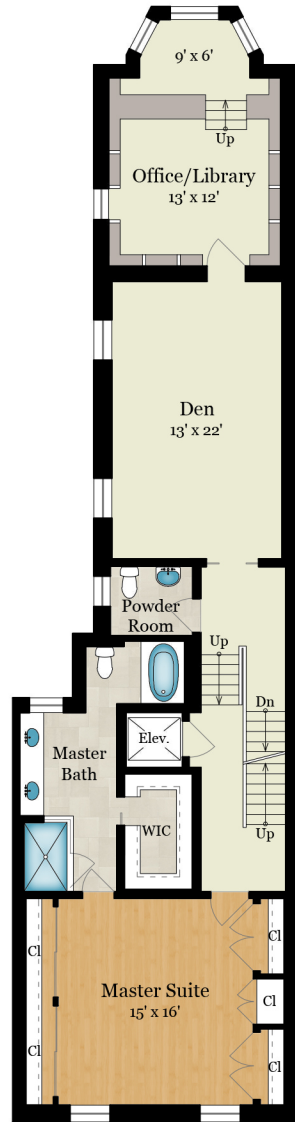


# 2022 DELANCEY PLACE | PHILADELPHIA, PA 19103



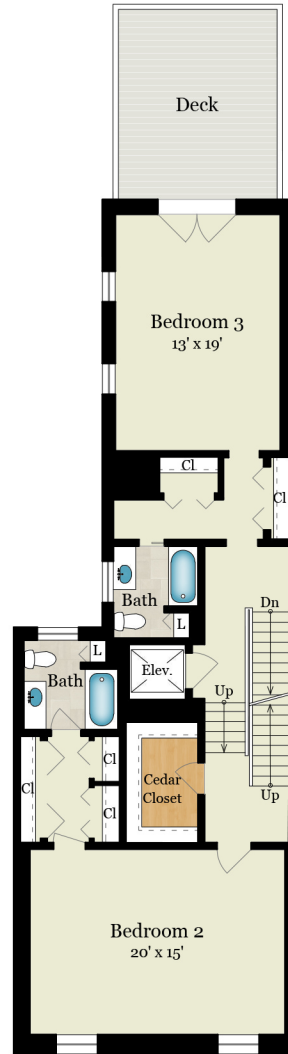
**FIRST FLOOR**

1,705 SQ FT



**SECOND FLOOR**

1,565 SQ FT



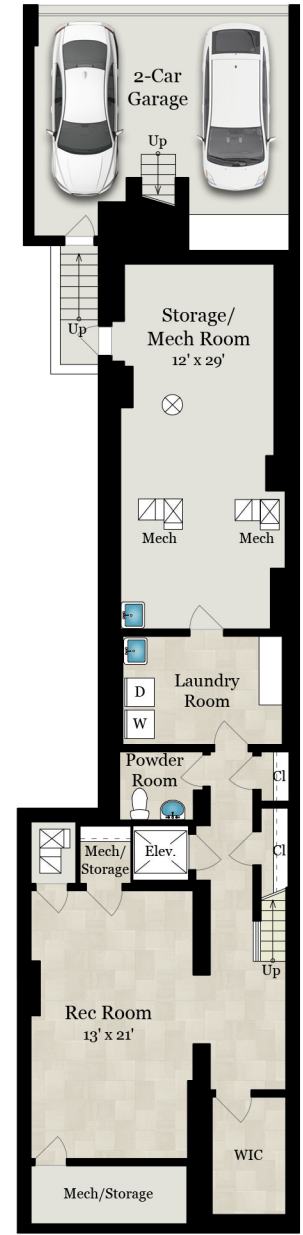
**THIRD FLOOR**

1,250 SQ FT



**FOURTH FLOOR**

880 SQ FT



**LOWER LEVEL**

850 SQ FT - Finished  
965 SQ FT - Unfinished

**Estimated Total Finished Square Footage: 6,250 SQ FT**

Above-Grade: 5,400 SQ FT Below-Grade: 850 SQ FT  
Plus 410 SQ FT 2-Car Garage on Lower Level  
Plus 555 SQ FT Storage/Mech Room on Lower Level  
Plus 55 SQ FT Mech Room (Fourth Floor)  
Calculated per ANSI Standard Z765-2003.

\* Estimated Total Finished & Unfinished Square Footage: 7,270 SQ FT